

Flowchart No.6

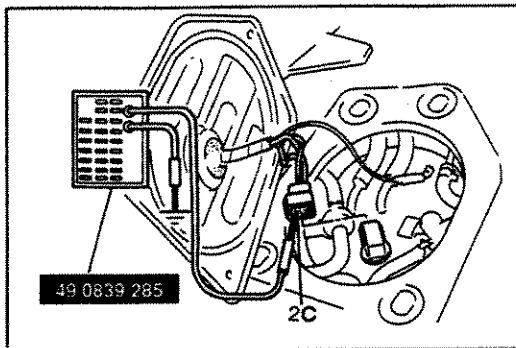
Symptom

Fuel gauge does not operate

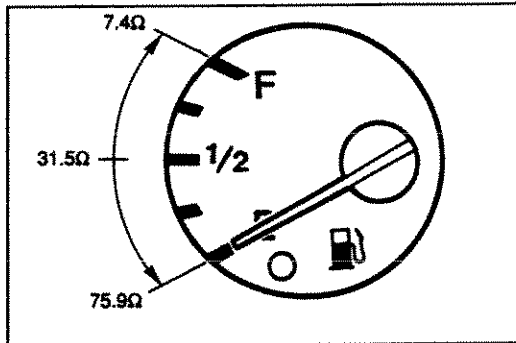
Possible cause

- Damaged fuel gauge sender unit
- Damaged fuel gauge
- Open or short circuit in wiring harness
- Poor connection of connector

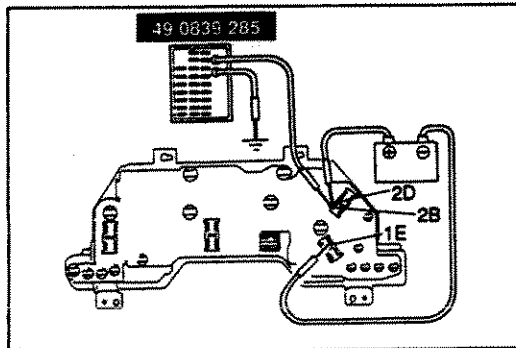
47UC1X-523



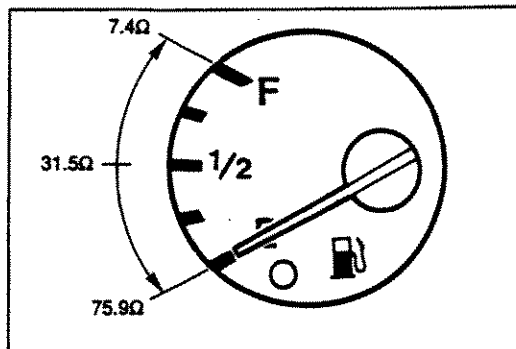
47UC1X-524



47UC1X-525



47UC1X-526



47UC1X-527

Step 1

1. Remove the fuel pump cover. (Refer to the 1994 RX-7 Workshop Manual, section F.)
2. Disconnect the fuel gauge sender unit connector.
3. Connect the red lead of the **SST** to terminal 2C (W/G) of the connector and the black lead to ground.
4. Turn the ignition switch to ON.
5. Set the **SST** to the resistance valves shown in the figure. To get an accurate reading, wait 2 minutes after setting each valve.
6. Verify that the fuel gauge indicates the correct valves. The allowable indication error is twice the width of the needle.

Gauge display	Action
Correct	Replace fuel gauge sender unit (Refer to 1994 RX-7 Workshop Manual, section F)
Incorrect	Go to Step 2

Step 2

1. Remove the instrument cluster. (Refer to page C1-13.)
2. Apply battery positive voltage to terminal 2D of the instrument cluster and connect terminal 1E of the instrument cluster to ground.
3. Connect the red lead of the **SST** to terminal 2B of the instrument cluster and the black lead to ground.
4. Set the **SST** to the resistance valves shown in the figure. To get an accurate reading, wait 2 minutes after setting each valve.
5. Verify that the fuel gauge indicates the correct values. The allowable indication error is twice the width of the needle.

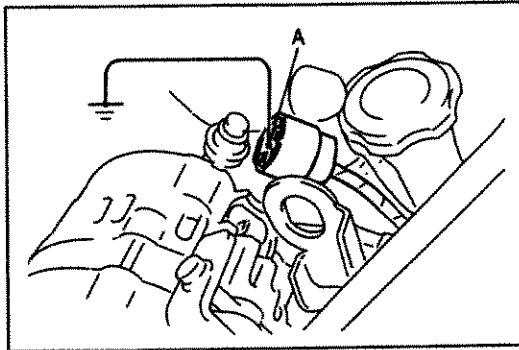
Gauge display	Action
Correct	Repair wiring harness (Instrument cluster—Fuel gauge)
Incorrect	Replace fuel gauge (Refer to page C1-14)

Flowchart No.2	Symptom	Coolant level, oil-level and alternator warning lights do not illuminate with ignition switch at ON
-----------------------	----------------	---

Possible cause

- Damaged instrument cluster
- Damaged alternator
- Burnt warning light bulbs
- Open or short circuit in wiring harness
- Poor connection of connector

47UC2X-513

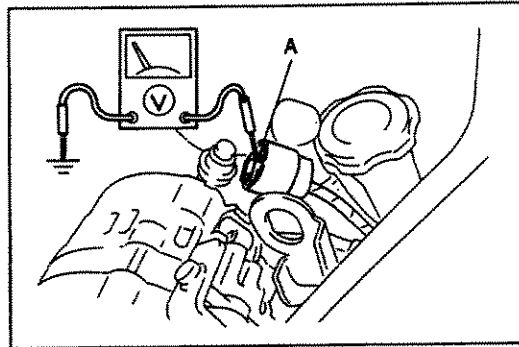


47UC2X-514

Step 1

1. Disconnect the alternator connector and ground terminal A (W/B).
2. Verify that the warning lights illuminate when the ignition switch is turned to ON.

Lights	Action
Illuminate	Inspect alternator (Refer to 1994 RX-7 Workshop Manual, section G)
Do not illuminate	Go to Step 2



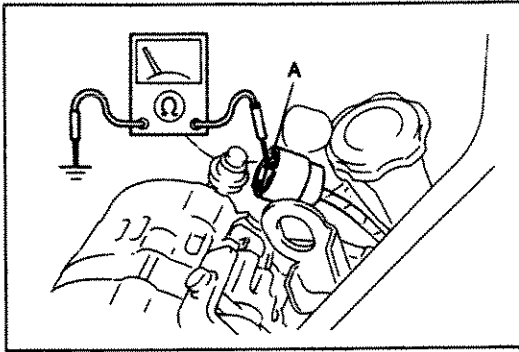
47UC2X-515

Step 2

Measure the voltage at terminal A (W/B) of the alternator connector.

B+: Battery positive voltage

Voltage	Action
B+	Inspect each bulb
Other	Repair wiring harness (Instrument cluster—Alternator)



47UC2X-535

Step 5

1. Disconnect the alternator connector.
2. Check for continuity between terminal A (W/B) of the alternator connector and ground.

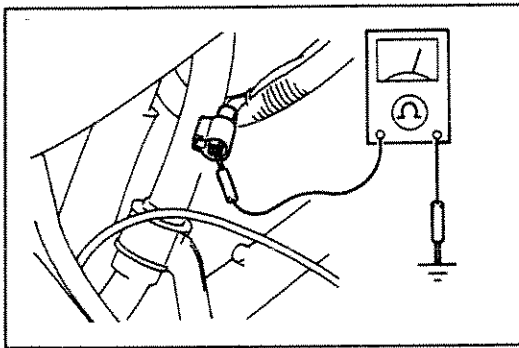
Continuity	Action
Yes	Repair wiring harness (Instrument cluster—Alternator)
No	Inspect alternator (Refer to 1994 RX-7 Workshop Manual, section G)

Flowchart No.8	Symptom	Oil-level warning light does not illuminate when oil level low (light illuminates with ignition switch at ON)
----------------	---------	--

Possible cause

- Damaged oil-level sensor
- Damaged instrument cluster
- Open or short circuit in wiring harness
- Poor connection of connector

47UC2X-536



47UC2X-537

Step 1

1. Disconnect the oil-level sensor connector.
2. Check for continuity between the terminal of the oil-level sensor and ground.

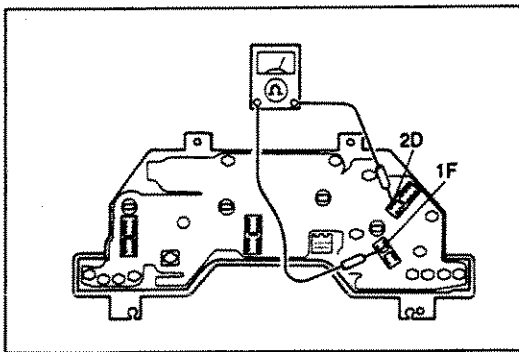
Oil level	Continuity
OK	No
Almost empty	Yes

3. If correct, go to Step 2.
4. If not as specified, replace the oil-level sensor.
(Refer to page C2-37.)

Step 2

Check for continuity between terminals 2D and 1F of the instrument cluster.

Continuity	Action
Yes	Repair wiring harness (Instrument cluster—Oil-level sensor)
No	Replace print circuit (Refer to section C1)



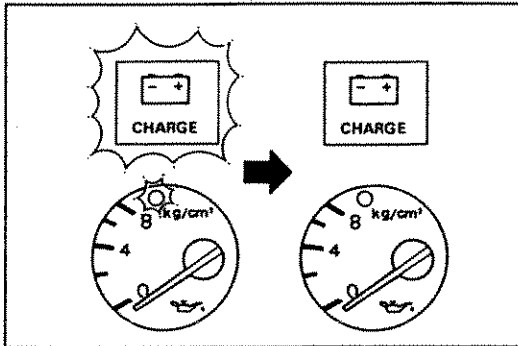
47UC2X-538

Flowchart No.10	Symptom	Coolant level warning light does not go out when engine is started
------------------------	----------------	--

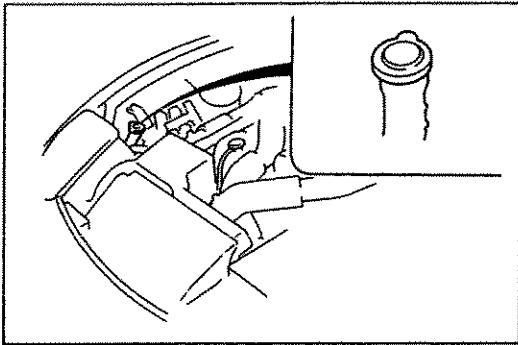
Possible cause

- Damaged coolant level sensor
- Damaged alternator
- Burnt coolant level warning light bulb
- Open or short circuit in wiring harness
- Poor connection of connector

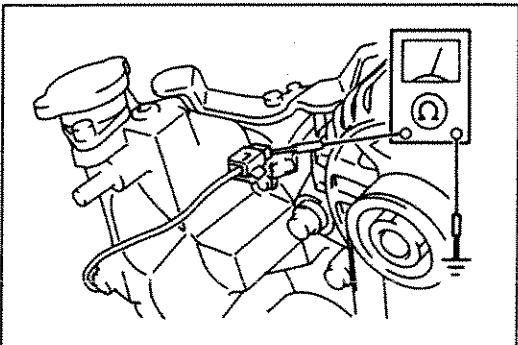
47UC2X-543



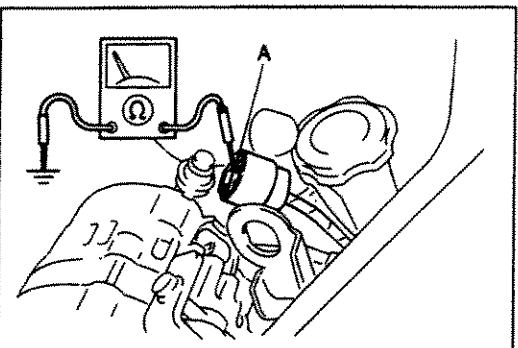
47UC2X-544



47UC2X-545



47UC2X-546



47UC2X-547

Step 1

Start the engine and check the alternator and oil level warning lights.

Lights	Action
Illuminate	Go to Step 4
Do not illuminate	Go to Step 2

Step 2

1. Turn the ignition switch to OFF.
2. Check the engine coolant level.

Engine coolant level	Action
OK	Go to Step 3
Almost empty	Add engine coolant

Step 3

1. Disconnect the coolant level sensor connector.
2. Check for continuity between the terminal of the coolant level sensor and ground.

Engine coolant level	Continuity
Below MIN	No
Above MIN	Yes

3. If correct, go to Step 4.
4. If not as specified, replace the coolant level sensor.
(Refer to page C2-37.)

Step 4

1. Disconnect the alternator connector.
2. Check for continuity between terminal A (W/B) of the alternator connector and ground.

Continuity	Action
Yes	Repair wiring harness (Instrument cluster—Alternator)
No	Inspect alternator (Refer to the 1994 RX-7 Workshop Manual, section G)

Flowchart No.4

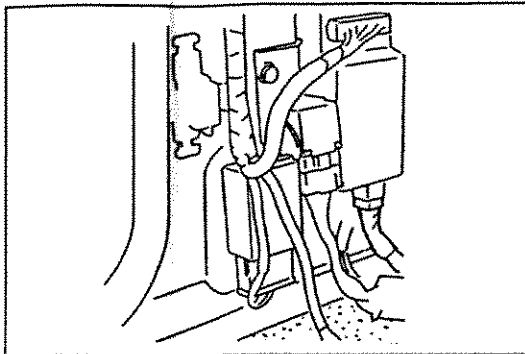
Symptom

Turn signal and hazard warning functions on one side do not operate

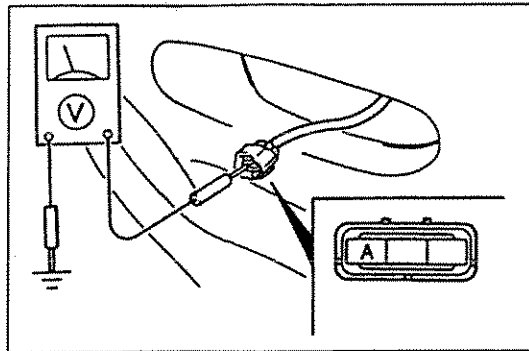
Possible cause

- Damaged flasher unit
- Open or short circuit in wiring harness
- Poor connection of connector

47UF1X-521



47UF1X-522



47UF1X-523

Step 1

1. Remove and inspect the flasher unit in CPU No. 2. (Refer to page F1-25.)
2. If OK, install the flasher unit and go to Step 2.
3. If defective, replace the flasher unit. (Refer to section Z3.)

Step 2

1. Turn the hazard warning switch on.
2. Measure the voltage at the terminal of the turn signal light connector on the inoperative side.

(Front turn lights)

	Wire color (terminal A)	
	CANADA	USA
Right	(G)	(G/W)
Left	(Y)	(G/B)

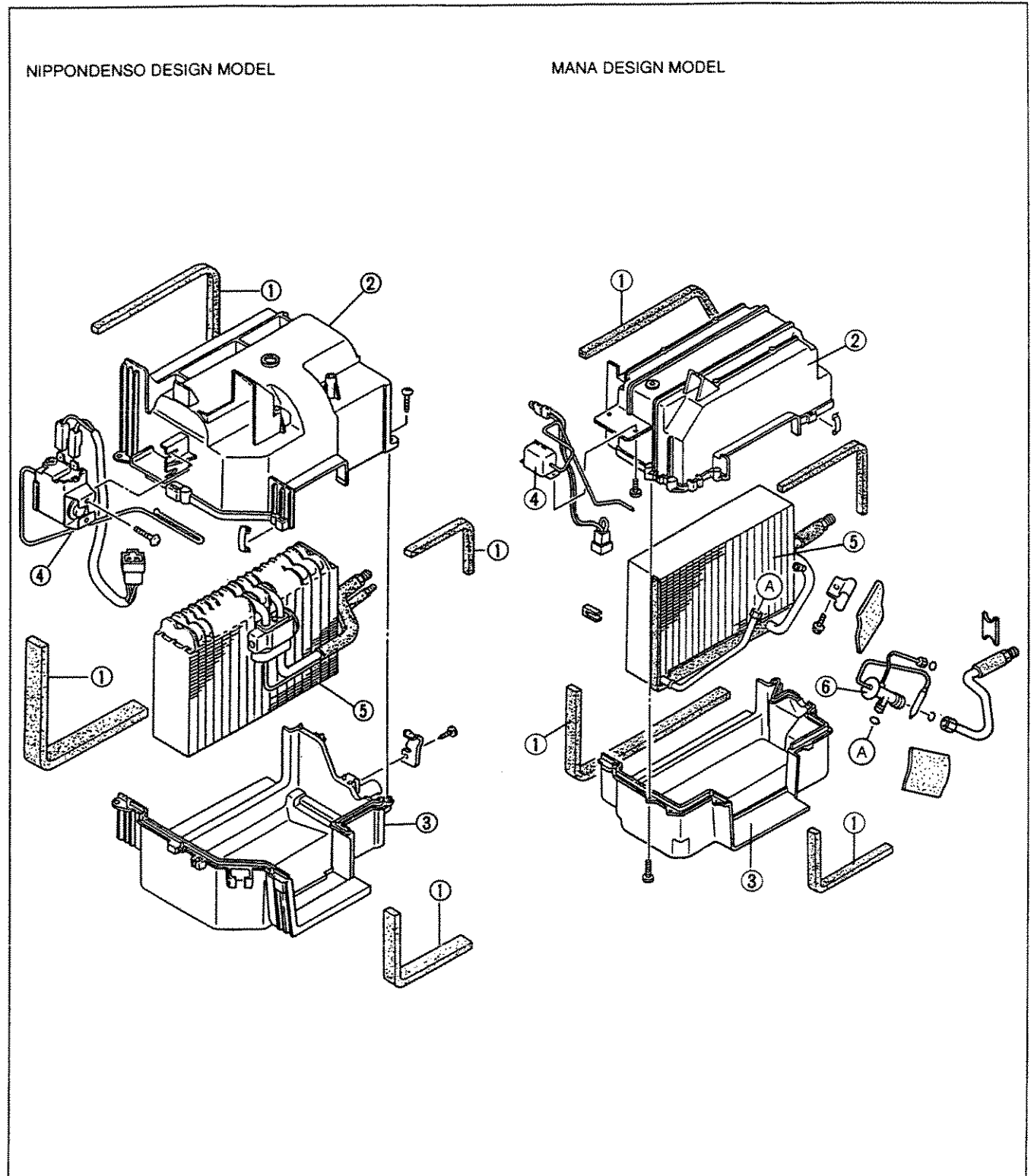
(Rear turn lights)

	Wire color (terminal C)
Right	(G/W)
Left	(G/B)

3. If other than battery positive voltage, repair the wiring harness (flasher unit—turn signal light).

Disassembly / Inspection / Assembly

1. Disassemble in the order shown in the figure.
2. Check for the following and repair or replace the evaporator as necessary.
 - ① Cracks, damages, and refrigerant leakage
 - ② Bent fins
3. Assemble in the reverse order of disassembly.



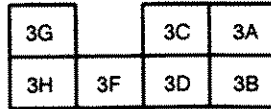
1. Seal
2. Cooling unit case (upper)
3. Cooling unit case (lower)

4. Thermoswitch
5. Evaporator
6. Expansion valve

47U0GX-653

FLASHER UNIT (IN CPU No. 2)
Terminal voltage

B+: Battery positive voltage



Z2

Terminal	Connection	Test condition	Voltage (v)	Inspection area
3A	Turn signal light (right)	Turn signal light (right) illuminated	Alternates 0V and B+	<ul style="list-style-type: none"> METER 15A fuse HAZARD 15A fuse Combination switch (Turn switch) Hazard warning switch Wiring harness (METER fuse - Turn switch - Flasher unit, HAZARD fuse - Flasher unit, Flasher unit - Hazard warning switch - GND)
		Hazard warning light illuminated		
		Other	0	
3B	GND	—	0	Wiring harness (Flasher unit—GND)
3C	Turn switch (right)	Ignition switch at ON and right turn switch on	B+	<ul style="list-style-type: none"> METER 15A fuse Combination switch (turn switch) Wiring harness (Fuse—Turn switch—Flasher unit)
		Other	0	
3D	Turn switch (left)	Ignition switch at ON and left turn switch on	B+	<ul style="list-style-type: none"> METER 15A fuse Combination switch (turn switch) Wiring harness (Fuse—Turn switch—Flasher unit)
		Other	0	
3E	—	—	—	—
3F	+B	Constant	B+	<ul style="list-style-type: none"> HAZARD 15A fuse Wiring harness (Fuse—Flasher unit)
3G	Hazard warning switch	Hazard warning switch on	0	<ul style="list-style-type: none"> HAZARD 15A fuse Hazard warning switch Wiring harness (Fuse—Flasher unit, Flasher unit—Hazard warning switch—GND)
		Hazard warning switch off	B+	
3H	Turn signal light (left)	Turn signal light (left) illuminated	Alternates 0V and B+	<ul style="list-style-type: none"> METER 15A fuse HAZARD 15A fuse Flasher unit Combination switch (turn switch) Hazard warning switch Wiring harness (METER fuse—Turn switch—Flasher unit, HAZARD fuse—Flasher unit, Flasher unit—Hazard warning switch—GND)
		Hazard warning light illuminated		
		Other	0	

47UZ2X-511